

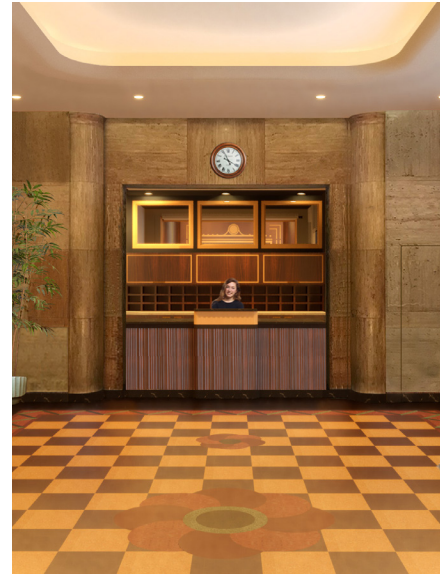
THE  
WRAY



LIGHT THE WAY

515 22ND STREET NW, WASHINGTON D.C.

# THE BEGINNING OF AN ERA



WELCOME HOME

Return to purpose and creativity at The Wray, an exceptional residence whose striking Art Deco design glows with inspiration and optimism. An ideal setting for the kind of quiet reflection that ignites bold transformation.

History, style,  
and modern  
convenience  
come together  
at The Wray.

In this handsome prewar apartment building, you'll find impeccable craftsmanship united with gleaming modern amenities. Located in the coveted Foggy Bottom neighborhood, The Wray is just steps away from the Metro and every advantage of urban living. Here you'll experience the glimmer of romance from a more elegant age, while setting your sights on a brighter future.



Formerly home to U.S. State Department offices, The Wray is an eight-story building gracefully restored to its original function as apartment residences. The grand Streamline Moderne lobby sets the tone for an experience rich in history and lavish in taste.

Upstairs, polished apartments celebrate the same vibrant style as the lobby. And they are designed to be as comfortable as they are refined. Premium amenities and concierge services help you live efficiently and recharge, so that you can focus on what's important and look ahead.



# ROOM TO GLOW



## AMENITIES

The Wray offers a wealth of luxury amenities, from the historic Streamline Moderne lobby to a rooftop with sweeping views of the Washington Monument.

Our rooftop terrace features grill stations, an outdoor living room, a firepit, and garden. Indoors, the penthouse club offers a lounge, bar, and private meeting room. State-of-the-art cardio and weight equipment, including Peloton bikes, are available in the fitness center.

We provide dedicated bike storage as well as additional storage areas. Wi-Fi is complimentary in the common areas. Our convenient in-house pet spa lets you pamper your pup without leaving the building.

Programming at The Wray is focused on brightening your days with special resident events and personalized experiences.



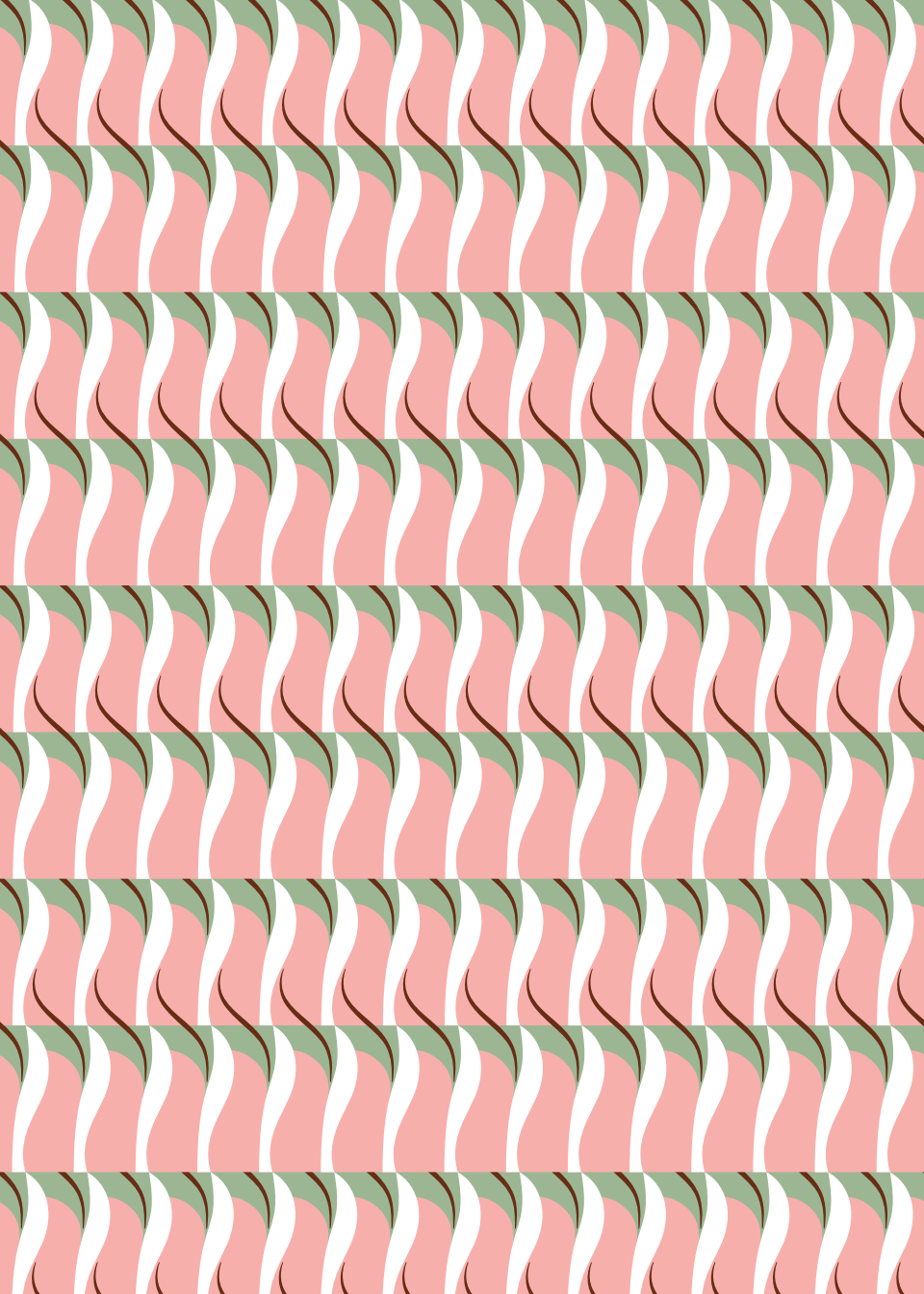
## SERVICES

The Wray provides Bozzuto Top Notch concierge and away-from-home services, including valet dry cleaning and package acceptance. Our maintenance team is on call 24-7.

The Bozzuto Welcome Home Commitment ensures that your apartment has been thoroughly cleaned, carefully inspected, and sealed before your arrival.

## FEATURES

Residences at The Wray feature granite countertops and warm wood flooring. Each apartment is equipped with an in-home washer and dryer and stainless steel appliances. Modern kitchens have grey shaker cabinets, matte black fixtures and hardware, and a sleek white tile backsplash.



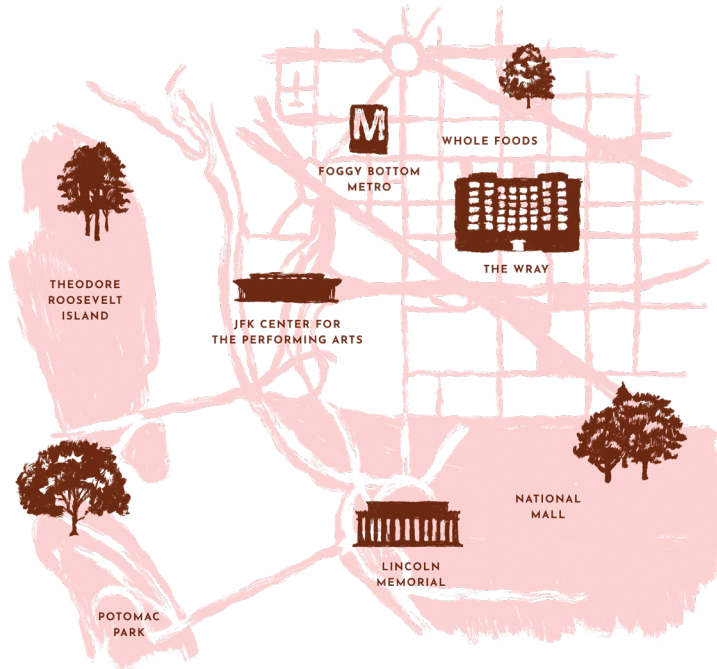
# LIGHT THE WAY

## NEIGHBORHOOD ---

Discover Foggy Bottom, an area rich with history and opportunities to illuminate new stories.

With a fascinating past rooted in our nation's industrial beginnings, Foggy Bottom is ripe for exploring and finding inspiration. Take in a performance at the world-renowned Kennedy Center, overlooking the Potomac River. Or seek outdoor adventure in Rock Creek Park. Stroll past historic row houses on your way to one of many stellar restaurants and bars.

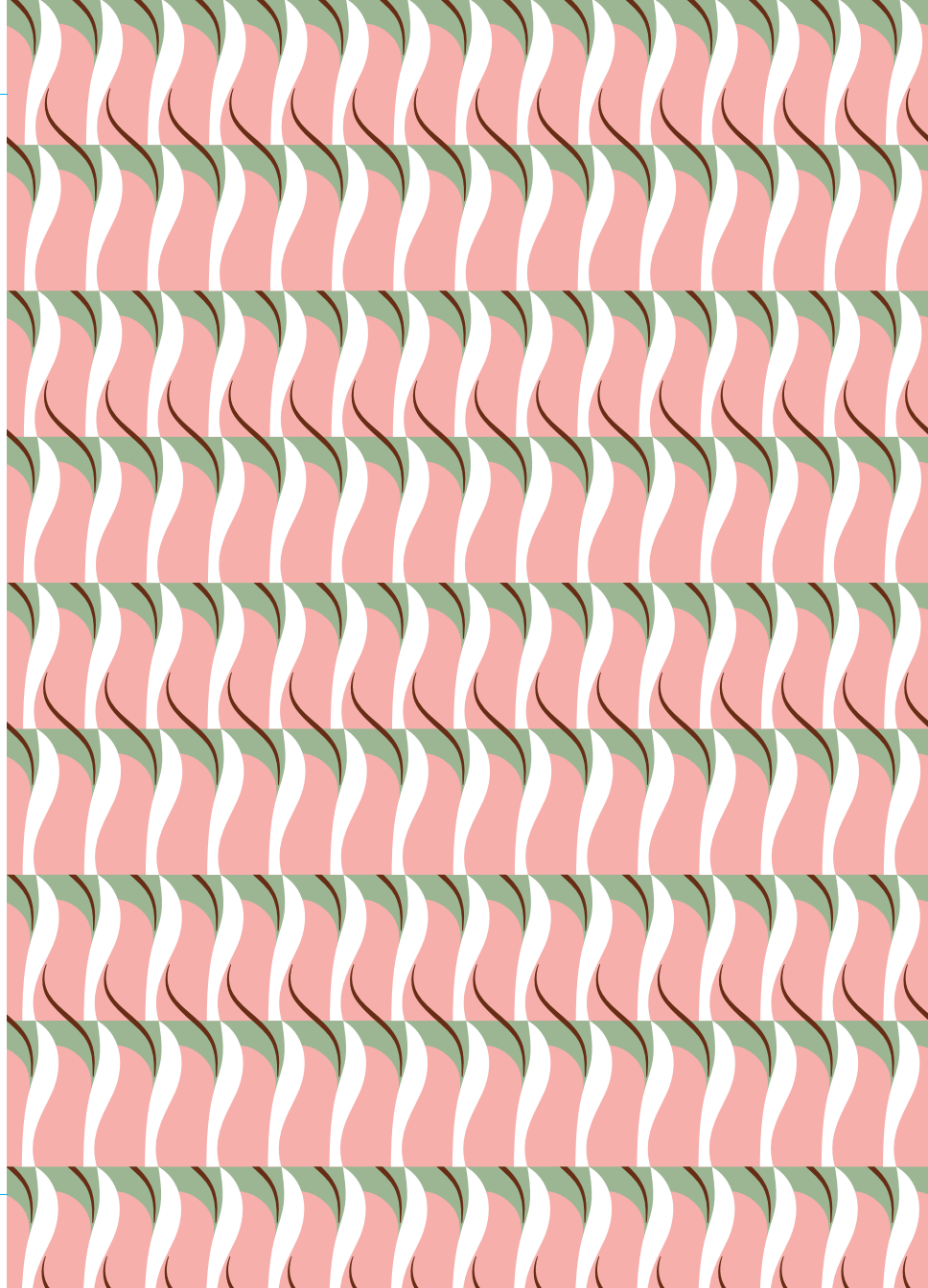
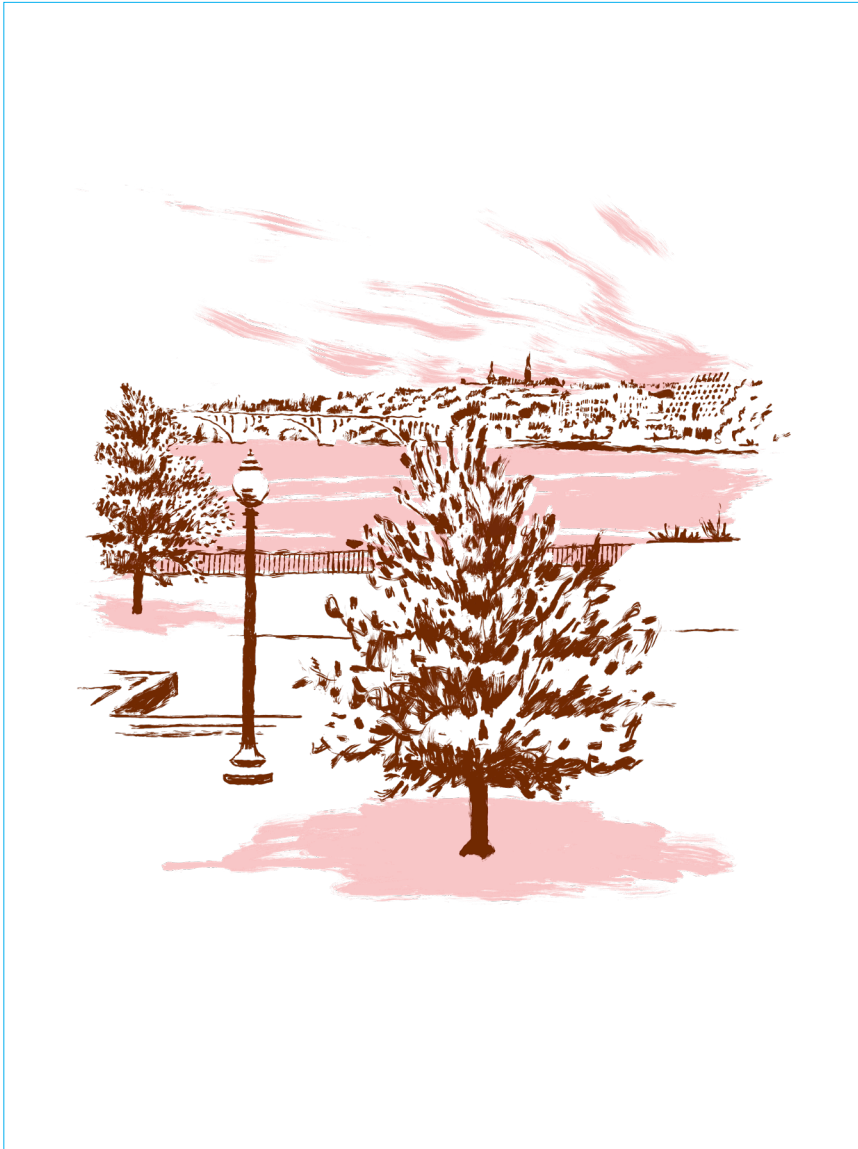




Foggy Bottom is well-known as home of The George Washington University, and iconic landmarks such as the U.S. State Department. But perhaps its most attractive quality for residents is incredible convenience. The neighborhood has virtually everything you need—from the Metro, to grocery stores, to The George Washington University Hospital. And it's easy to get to Georgetown and Dupont Circle, as well as the National Mall.

With its swirl of arts, culture, history, nature, and so much more, Foggy Bottom is one of the most exhilarating areas to live in DC.









THEWRAYDC.COM | TEL. 202.719.0754  
515 22ND STREET NW, WASHINGTON D.C.

